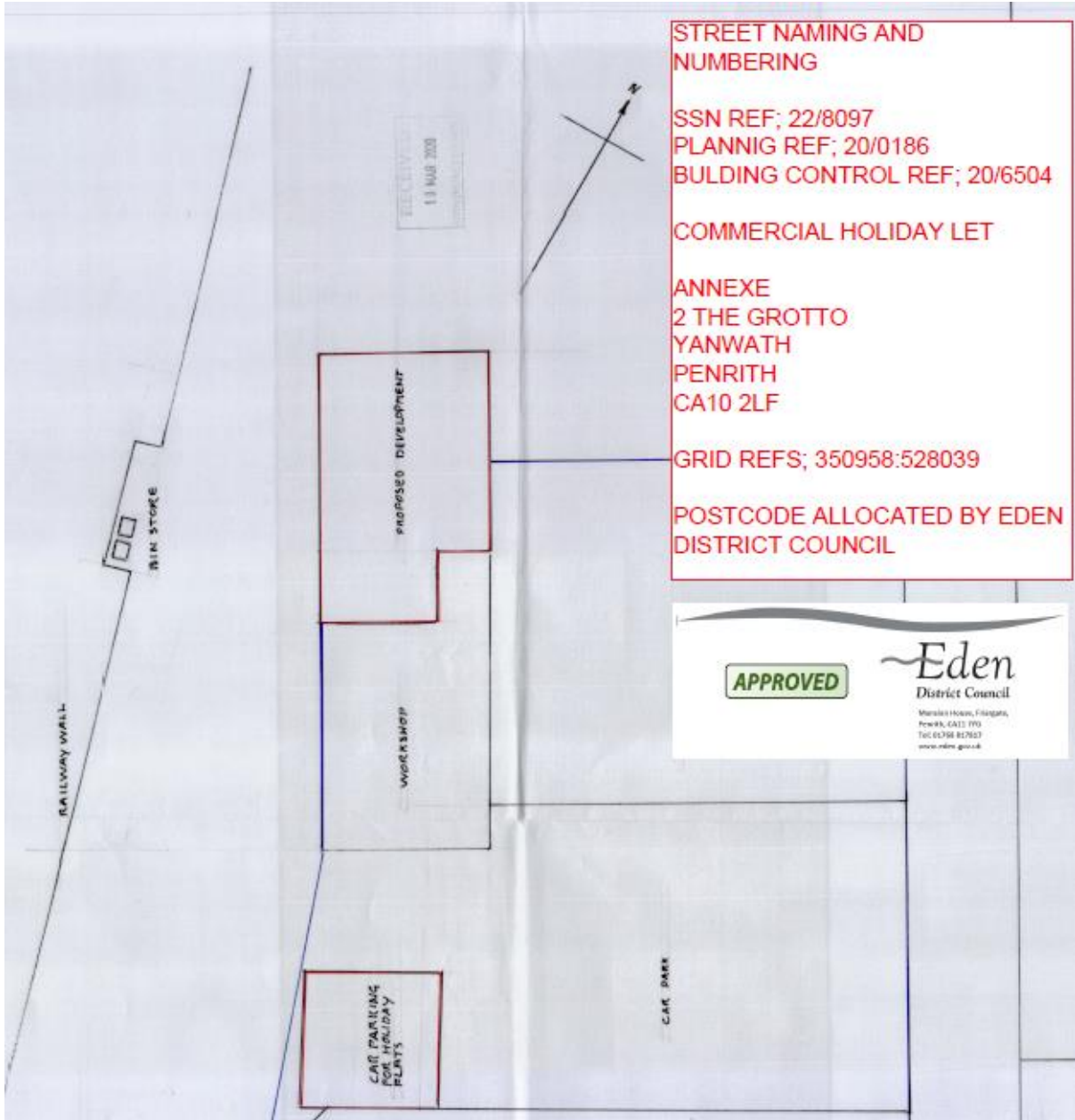


228097-Annexe-2 The Grotto-Yanwath-Penrith-Location Plan





STREET NAMING AND NUMBERING

SSN REF; 22/8097
PLANNING REF; 20/0186
BUILDING CONTROL REF; 20/6504

COMMERCIAL HOLIDAY LET

ANNEXE
2 THE GROTTO
YANWATH
PENRITH
CA10 2LF

GRID REFS; 350958:528039

POSTCODE ALLOCATED BY EDEN DISTRICT COUNCIL

APPROVED

Eden
District Council

Market House, Flaggate,
Penrith, CA11 1PD
Tel 01768 817627
www.eden.gov.uk