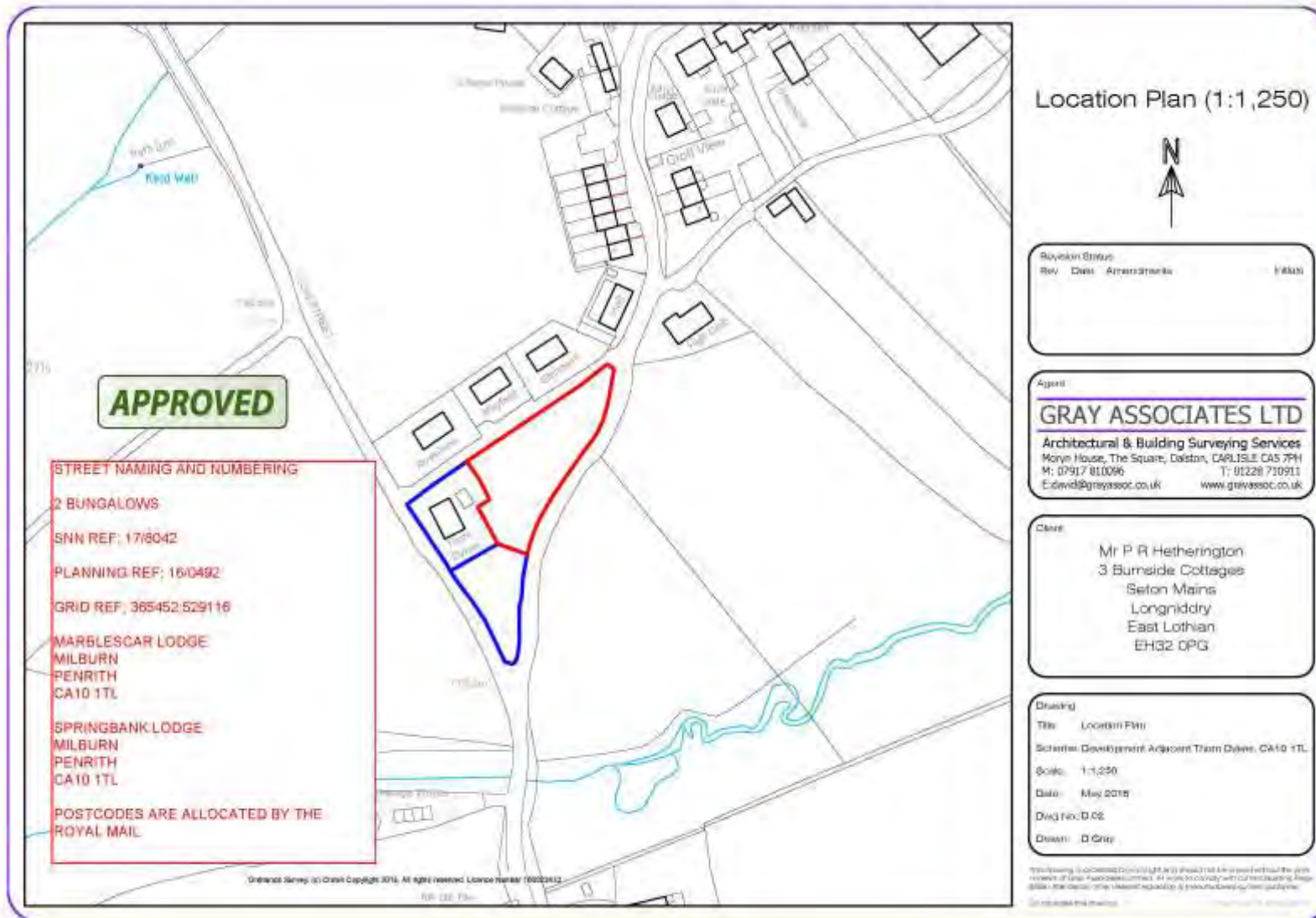


17/8042 – Springbank Lodge and Marblescar Lodge, Milburn



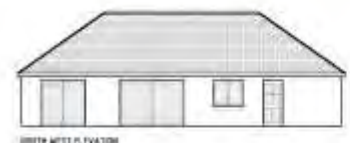
Site Plan (1:200)



UNIT 1 - SOUTH EAST ELEVATION



UNIT 2 - SOUTH EAST ELEVATION



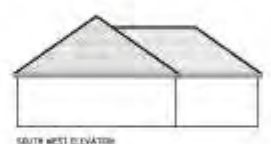
UNIT 1 - NORTH WEST ELEVATION



UNIT 2 - NORTH WEST ELEVATION



UNIT 1 - SOUTH WEST ELEVATION



UNIT 2 - SOUTH WEST ELEVATION



UNIT 1 - NORTH EAST ELEVATION



UNIT 2 - NORTH EAST ELEVATION



UNIT 1 - PROPOSED GROUND FLOOR PLAN



UNIT 2 - PROPOSED GROUND FLOOR PLAN

Project:
 No. 204
 Date: 20/08/2024

Unit:
GRAY ASSOCIATES LTD
 Architects & Planning Services
 100-102, The Square, London, ONTARIO, CANADA
 Tel: 905-881-8888 Fax: 905-881-8889
 Email: info@graya.com

No. 111
 100-102 The Square
 100-102 The Square
 London, Ontario
 N6C 2E2

Date: 20/08/2024
 Project: 204
 No. 111
 100-102 The Square
 London, Ontario