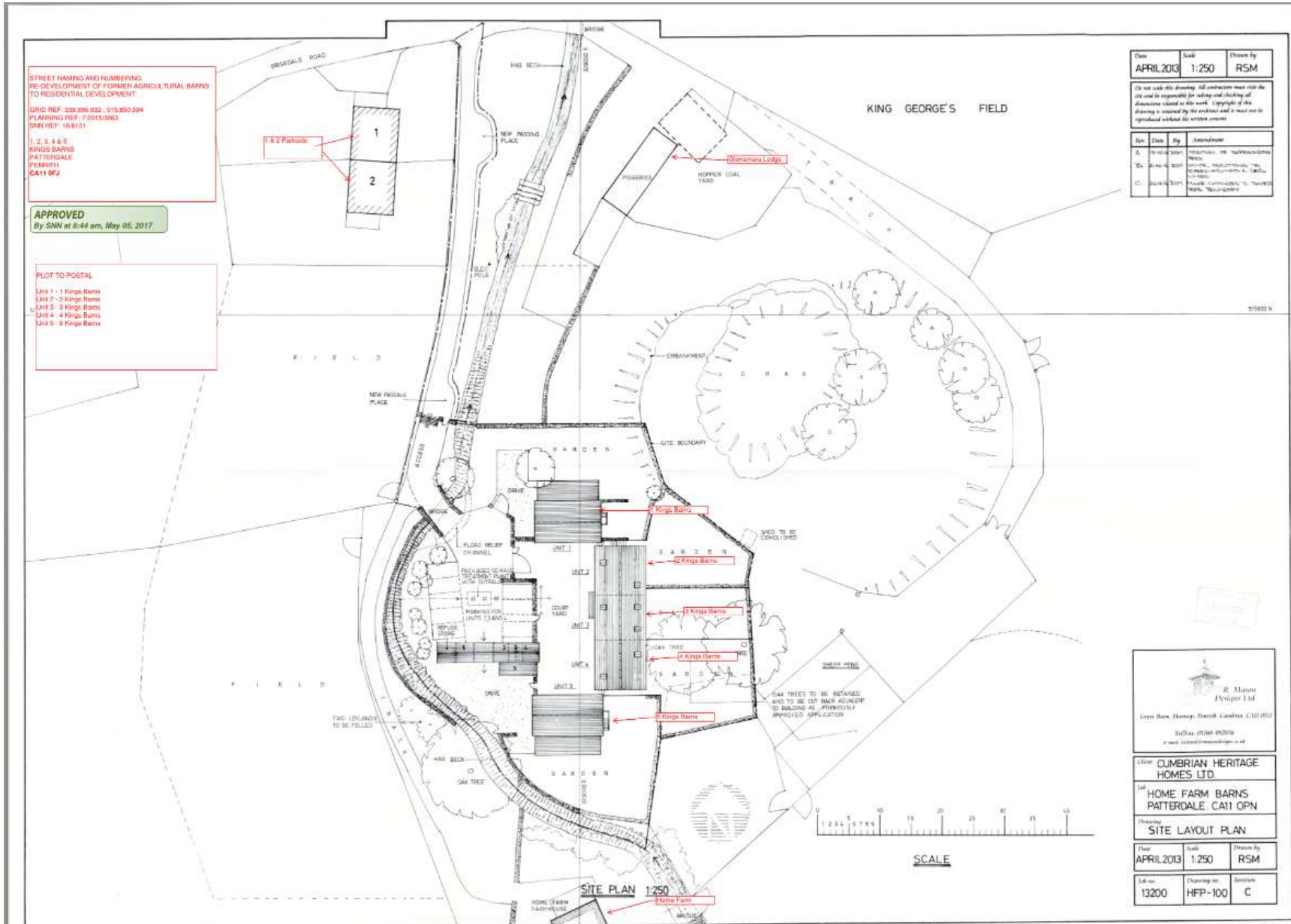


168101_1-5_Kings_Barn_Patterdale_Development_Plan



STREET NAMING AND NUMBERING
 PRO-DEVELOPMENT OF FORMER AGRICULTURAL BARN TO RESIDENTIAL DEVELOPMENT.
 GRID REF: 332 895 932 515490-504
 PLANNING REF: 7/2015/003
 SNN REF: 168101

1, 2, 3, 4 & 5
 KINGS BARNS
 PATTERDALE
 (ELEMENT 1)
 CA11 0P3

APPROVED
 By SNN at 8:44 am, May 05, 2017

PLOT TO POSTAL

Unit 1 - 1 Kings Barns
 Unit 2 - 2 Kings Barns
 Unit 3 - 3 Kings Barns
 Unit 4 - 4 Kings Barns
 Unit 5 - 5 Kings Barns

Date	Scale	Drawn by
APRIL 2013	1:250	RSM

Do not scale this drawing. All dimensions must refer to the site and be responsible for taking and checking all dimensions related to this work. Copyright of this drawing is retained by the architect and it must not be reproduced without the written consent.

Rev	Date	By	Amendment
A	16/04/2013	RSM	PROVISION OF TRANSMISSIONS (MISC)
B	22/04/2013	RSM	REVISIONS TO TRANSMISSIONS (MISC)
C	24/04/2013	RSM	FINAL TRANSMISSIONS (MISC)

R. Mann
 Design Ltd
 Green Bank, Hensley, North Yorkshire, YO12 0YD
 Tel: 01756 892016
 E: r.mann@rmanndesign.co.uk

Client: **CUMBERIAN HERITAGE HOMES LTD.**

1st: **HOME FARM BARNS PATTERDALE, CA11 0PN**

Drawing: **SITE LAYOUT PLAN**

Date	Scale	Drawn by
APRIL 2013	1:250	RSM

Lab no	Drawing no	System
13200	HFP-100	C