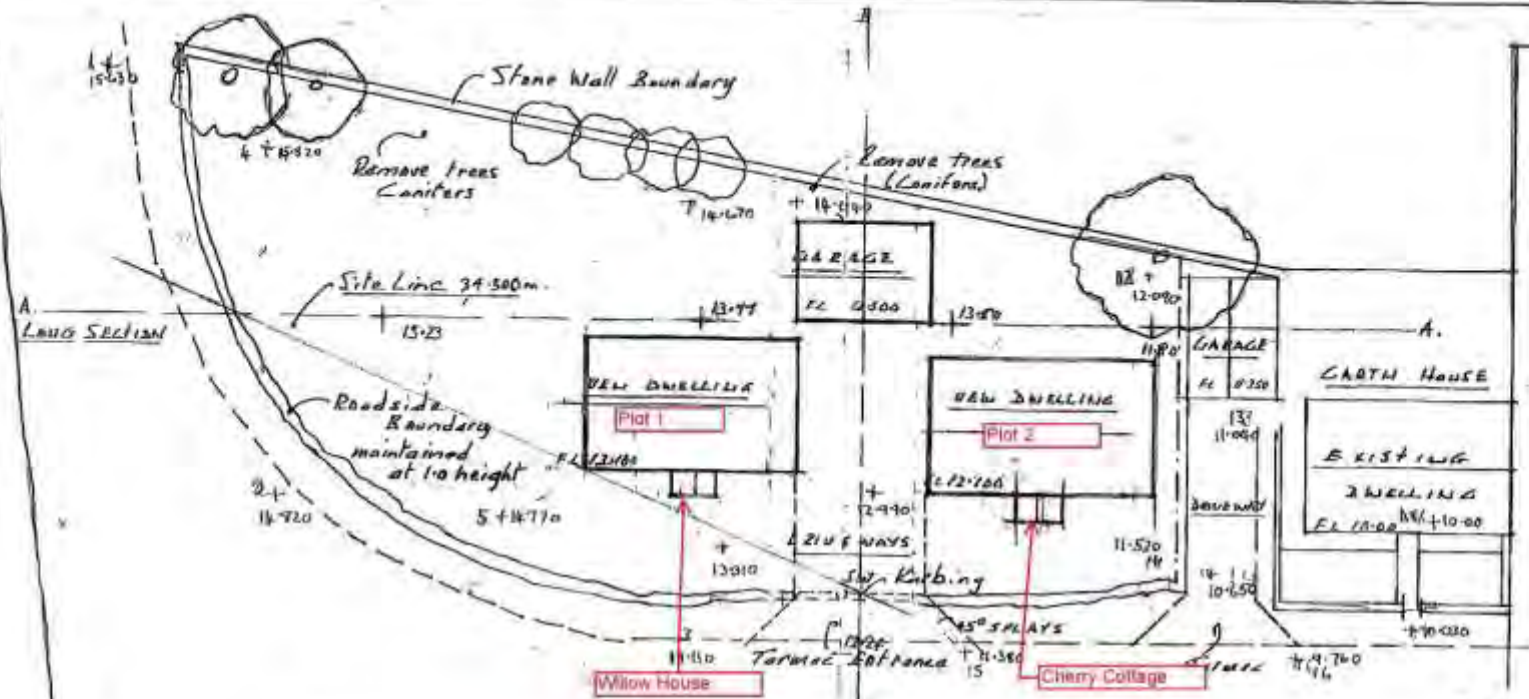


# 18/8086 New Dwellings at Little Salkeld, Penrith





SITE PLAN scale 1/200

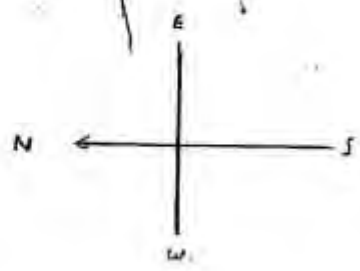
A. LONG SECTION

B. CROSS SECTION B-B

TO LANGWATHBY →

- AMENDED LAYOUT JULY 2011
1. Access moved to Joint
  2. Levels added July 2011
  3. Drags moved South from original site line Oct. 1st.

.3/11/0939



PROPOSED DWELLINGS AT  
GARTH HOUSE L. SALKELD  
FDR MR D. PAWLETT

EDEN TECHNICAL SERVICES				
20 OCT 2011				
NO.	ACK	PREP	CHK	DATE
1	1	1	1	1
2	1	1	1	1
3	1	1	1	1
4	1	1	1	1