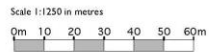
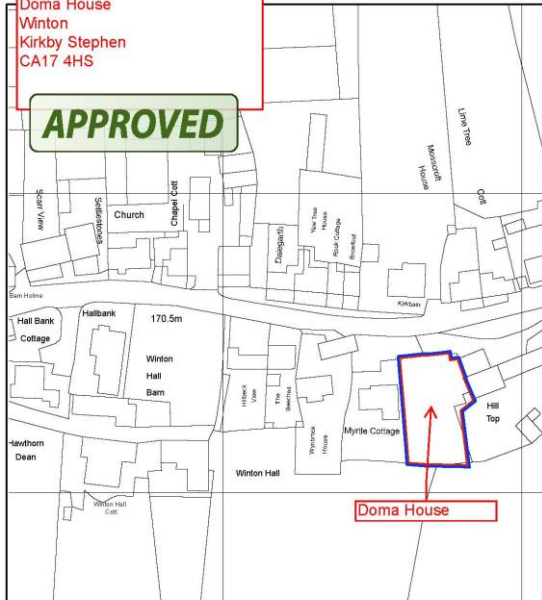


19/8119 Doma House Winton

New Residential Dwelling at
Winton, Kirkby Stephen
Planning Ref: 18/0482
SNN Ref: 19/8119

Doma House
Winton
Kirkby Stephen
CA17 4HS

APPROVED



Site	Local	Other	Other
PLANNING			
Winton Site			
Location Plan			
Ref	18/0482	Ref	Jan-18
Scale	1:1250	Scale	1:1250
MASON GILLIBRAND			
ARCHITECTS			
14 WILLOW HILL, FELL VIEW, CATION LANGRATER, LA2 9AA			
T: 01624 778 377 F: 01624 778 338 www.masongillibrand.com			
© 2018 Mason Gillibrand Architects. All rights reserved. This document is the property of Mason Gillibrand Architects and is not to be distributed, copied, or used in any way without the prior written consent of Mason Gillibrand Architects.			



KEY
 176.0 Proposed levels
 176.0 Existing level

Rev F 14.08.2018Am. Planning
 Rev E 14.08.2018Am. Shed added to the site plan.
 Rev D 23.07.2018Am. Window added to ensuite with frosted glass.
 Rev C 16.07.2018Am. Changes to the elevations in accordance with the planning officers comments - North (front elevation) - shed in elevation removed, width of front windows reduced in area, bathroom and wet windows increased in speed and location adjusted. East elevation - return at point of rear gable introduced. West elevation windows removed from bedroom 1 patio removed. Position of house moved north towards the road.
 Rev B 14.06.2018Am. Amended for planning
 Rev A 14.02.2018Am. Plans amended following client meeting.



Rev	Date	Drawn	Checked

PLANNING

--	--	--	--

Winton Site

--	--	--	--

Proposed Site Plan / Floor Plans

--	--	--	--

Scale 1:100 @ A1/L1
 14 HOLLOWAY HILL, HULLYBROOK CASTLE, LANCASTER, LANC. LA1 1 5J
 T: (01524) 771 871 F: (01524) 771 101 | www.masongillibrand.com