

19/8026 Helbeck Road



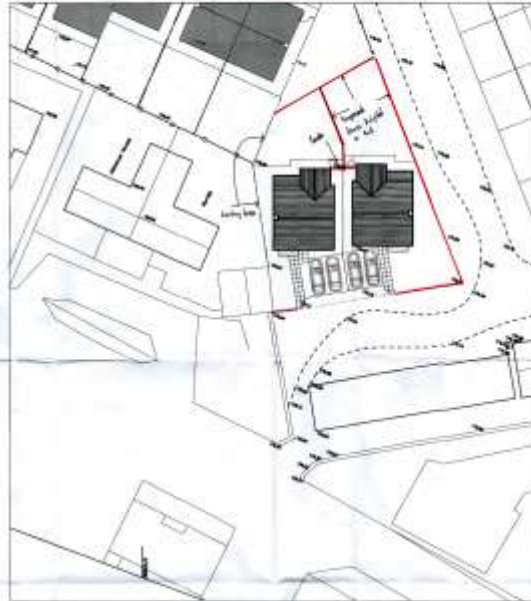
south elevation



unit A: ground floor plan
(unit B handed)



unit A first floor plan
(unit B handed)



site plan - as proposed

rev b - client update oct16
rev a - planning submission jun16



charactered
architects
industrial
building
consultants
interior
designers

class
messrs f, g & m
allison

owner
land to east of
christ craft
brough
kirkby stephen

drawing
indicative plans
& elevations

drawn by: pat148/01
scale: 1:200/400/8A3
1:100/200/8A1
(drawing 2/2/16)

rev: b
date: jun 16

withell, kirkby stephen, cambridgeshire, CA17 4JG
tel & fax: 01763 711203

no drawing to be published without license
and may not be reproduced without license

3/17/0085