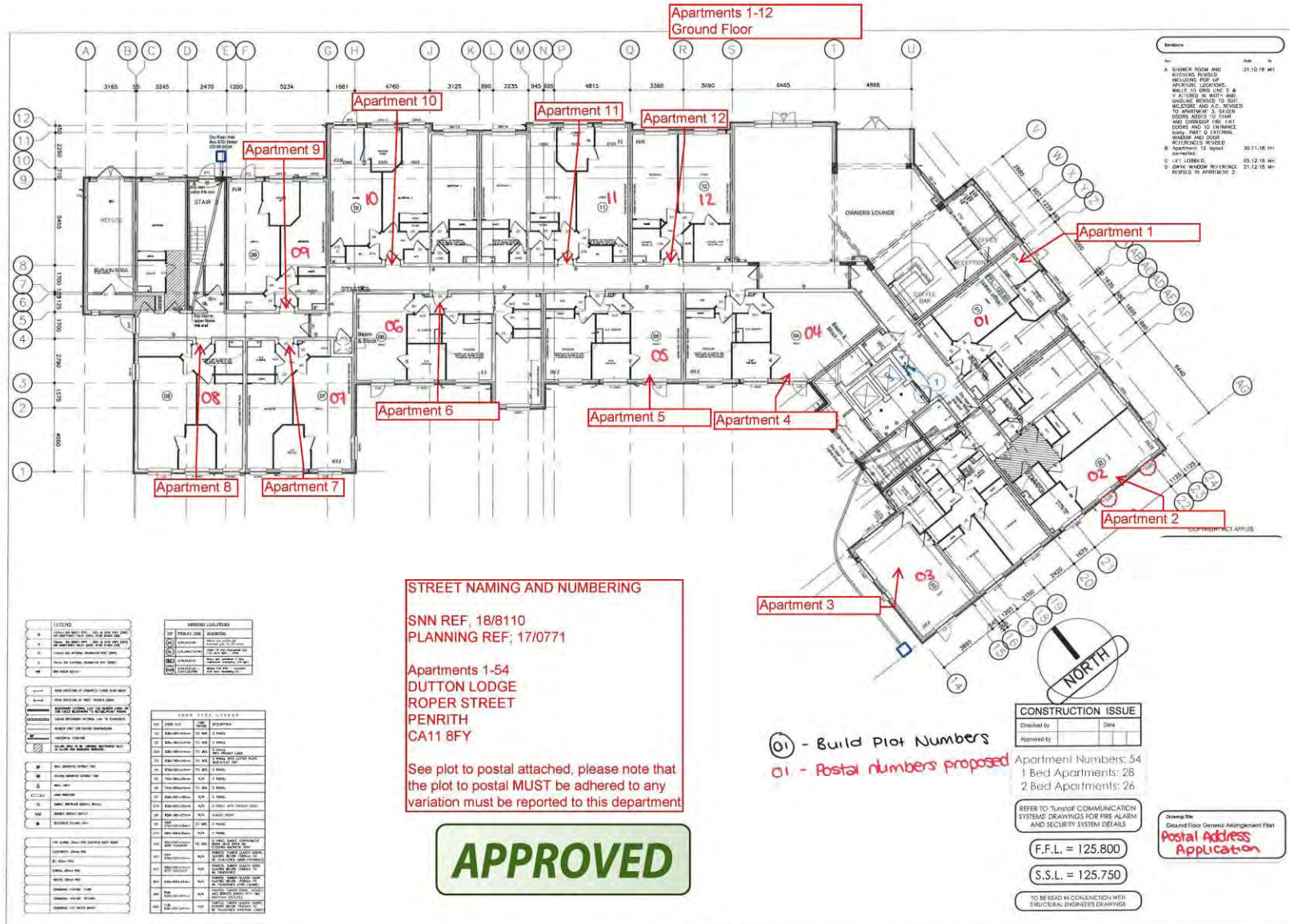


18/8110 Apartments 1-54 Dutton Lodge



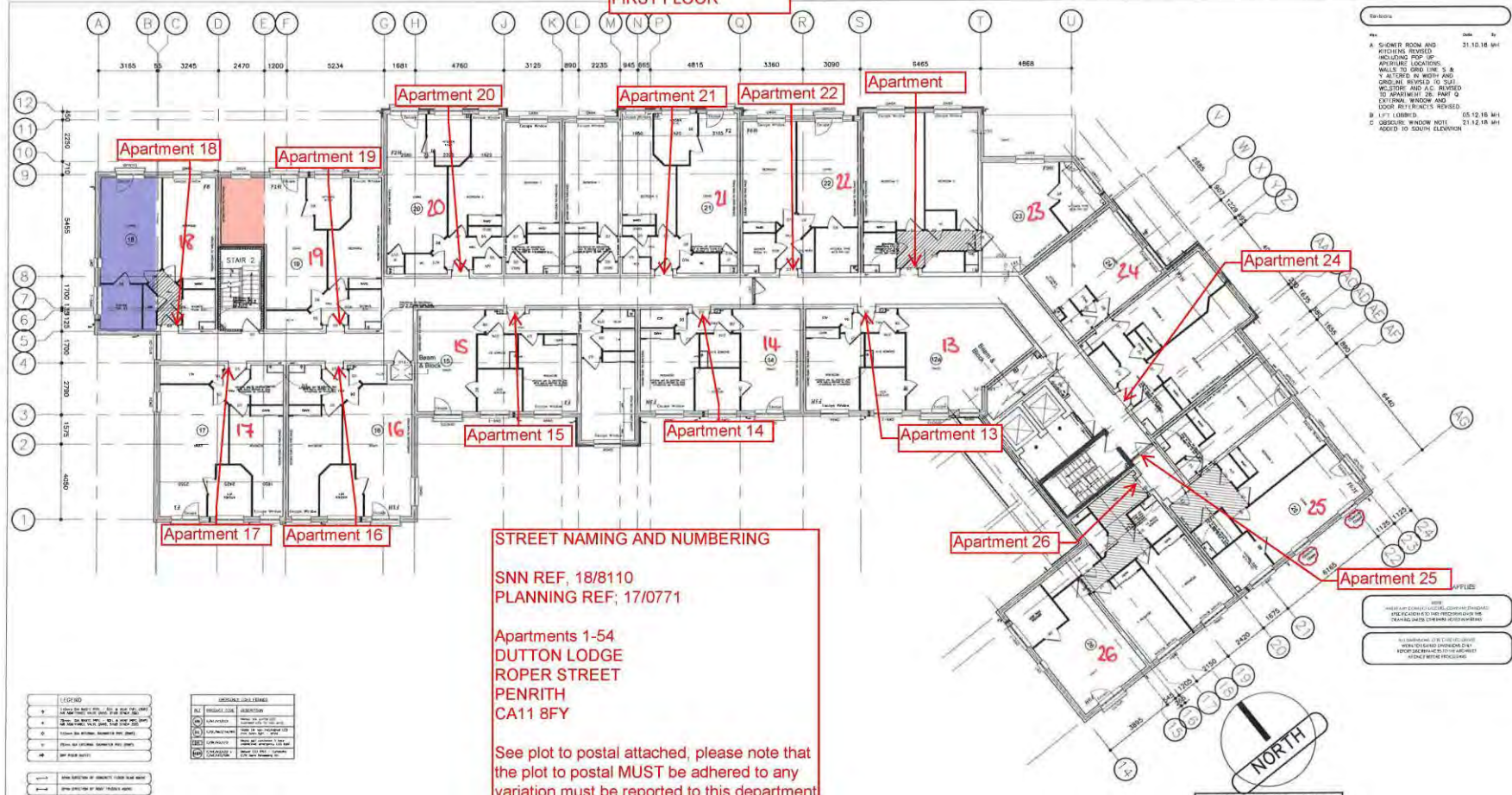
Revisions

No.	Date	By
A	31.10.18 MH	
B	30.11.18 PH	
C	05.12.18 MH	
D	21.12.18 MH	

A SHOW ROOM AND KITCHEN PROVIDED INCLUDING FURNITURE AND APPLIANCES. A YARD WITH WETTING AND WASHING FACILITIES TO BE PROVIDED. A STORE AND CHANGING ROOMS TO BE PROVIDED. A RECEPTION AREA TO BE PROVIDED. A LOBBY TO BE PROVIDED. A RECEPTION AREA TO BE PROVIDED. A LOBBY TO BE PROVIDED. A RECEPTION AREA TO BE PROVIDED. A LOBBY TO BE PROVIDED.

SYMBOL	DESCRIPTION
1	WALL
2	DOOR
3	WINDOW
4	GLASS
5	ROOF
6	FLOOR
7	CEILING
8	STAIR
9	LIFT
10	MECHANICAL
11	ELECTRICAL
12	PLUMBING
13	LANDSCAPE
14	EXTERNAL
15	INTERNAL
16	FINISH
17	CLADDING
18	GLAZING
19	SCREENING
20	SCREENING
21	SCREENING
22	SCREENING
23	SCREENING
24	SCREENING
25	SCREENING
26	SCREENING
27	SCREENING
28	SCREENING
29	SCREENING
30	SCREENING
31	SCREENING
32	SCREENING
33	SCREENING
34	SCREENING
35	SCREENING
36	SCREENING
37	SCREENING
38	SCREENING
39	SCREENING
40	SCREENING
41	SCREENING
42	SCREENING
43	SCREENING
44	SCREENING
45	SCREENING
46	SCREENING
47	SCREENING
48	SCREENING
49	SCREENING
50	SCREENING
51	SCREENING
52	SCREENING
53	SCREENING
54	SCREENING

**Apartments 13-26
FIRST FLOOR**



STREET NAMING AND NUMBERING

SNN REF, 18/8110
PLANNING REF, 17/0771

Apartments 1-54
DUTTON LODGE
ROPER STREET
PENRITH
CA11 8FY

See plot to postal attached, please note that the plot to postal MUST be adhered to any variation must be reported to this department

- Revisions
- | Rev | Date | By |
|-----|----------|----|
| A | 31.10.18 | MH |
- A SHOWER ROOM AND KITCHEN REVISED INCLUDING TOP UP.
 - APARTURE LOCATIONS WALLS TO GRID LINE S & Y REVISED IN BOTH A/D.
 - GRIDLINE REVISED TO S21 WESTERN WINDOW AND DOOR RHT FINISHES REVISED.
 - B LEFT CLOSET.
 - C OBSOLETE WINDOW NOTE ADDED TO SOUTH ELEVATION.

LEGEND	
[Symbol]	APARTMENT 13-26
[Symbol]	APARTMENT 17-19
[Symbol]	APARTMENT 20-22
[Symbol]	APARTMENT 23-26
[Symbol]	STAIR 2
[Symbol]	STAIR 1
[Symbol]	STAIR 3
[Symbol]	STAIR 4
[Symbol]	STAIR 5
[Symbol]	STAIR 6
[Symbol]	STAIR 7
[Symbol]	STAIR 8
[Symbol]	STAIR 9
[Symbol]	STAIR 10
[Symbol]	STAIR 11
[Symbol]	STAIR 12
[Symbol]	STAIR 13
[Symbol]	STAIR 14
[Symbol]	STAIR 15
[Symbol]	STAIR 16
[Symbol]	STAIR 17
[Symbol]	STAIR 18
[Symbol]	STAIR 19
[Symbol]	STAIR 20
[Symbol]	STAIR 21
[Symbol]	STAIR 22
[Symbol]	STAIR 23
[Symbol]	STAIR 24
[Symbol]	STAIR 25
[Symbol]	STAIR 26
[Symbol]	STAIR 27
[Symbol]	STAIR 28
[Symbol]	STAIR 29
[Symbol]	STAIR 30
[Symbol]	STAIR 31
[Symbol]	STAIR 32
[Symbol]	STAIR 33
[Symbol]	STAIR 34
[Symbol]	STAIR 35
[Symbol]	STAIR 36
[Symbol]	STAIR 37
[Symbol]	STAIR 38
[Symbol]	STAIR 39
[Symbol]	STAIR 40
[Symbol]	STAIR 41
[Symbol]	STAIR 42
[Symbol]	STAIR 43
[Symbol]	STAIR 44
[Symbol]	STAIR 45
[Symbol]	STAIR 46
[Symbol]	STAIR 47
[Symbol]	STAIR 48
[Symbol]	STAIR 49
[Symbol]	STAIR 50
[Symbol]	STAIR 51
[Symbol]	STAIR 52
[Symbol]	STAIR 53
[Symbol]	STAIR 54
[Symbol]	STAIR 55
[Symbol]	STAIR 56
[Symbol]	STAIR 57
[Symbol]	STAIR 58
[Symbol]	STAIR 59
[Symbol]	STAIR 60
[Symbol]	STAIR 61
[Symbol]	STAIR 62
[Symbol]	STAIR 63
[Symbol]	STAIR 64
[Symbol]	STAIR 65
[Symbol]	STAIR 66
[Symbol]	STAIR 67
[Symbol]	STAIR 68
[Symbol]	STAIR 69
[Symbol]	STAIR 70
[Symbol]	STAIR 71
[Symbol]	STAIR 72
[Symbol]	STAIR 73
[Symbol]	STAIR 74
[Symbol]	STAIR 75
[Symbol]	STAIR 76
[Symbol]	STAIR 77
[Symbol]	STAIR 78
[Symbol]	STAIR 79
[Symbol]	STAIR 80
[Symbol]	STAIR 81
[Symbol]	STAIR 82
[Symbol]	STAIR 83
[Symbol]	STAIR 84
[Symbol]	STAIR 85
[Symbol]	STAIR 86
[Symbol]	STAIR 87
[Symbol]	STAIR 88
[Symbol]	STAIR 89
[Symbol]	STAIR 90
[Symbol]	STAIR 91
[Symbol]	STAIR 92
[Symbol]	STAIR 93
[Symbol]	STAIR 94
[Symbol]	STAIR 95
[Symbol]	STAIR 96
[Symbol]	STAIR 97
[Symbol]	STAIR 98
[Symbol]	STAIR 99
[Symbol]	STAIR 100

CONSTRUCTION ISSUE

Checked by: _____ Date: _____

Approved by: _____

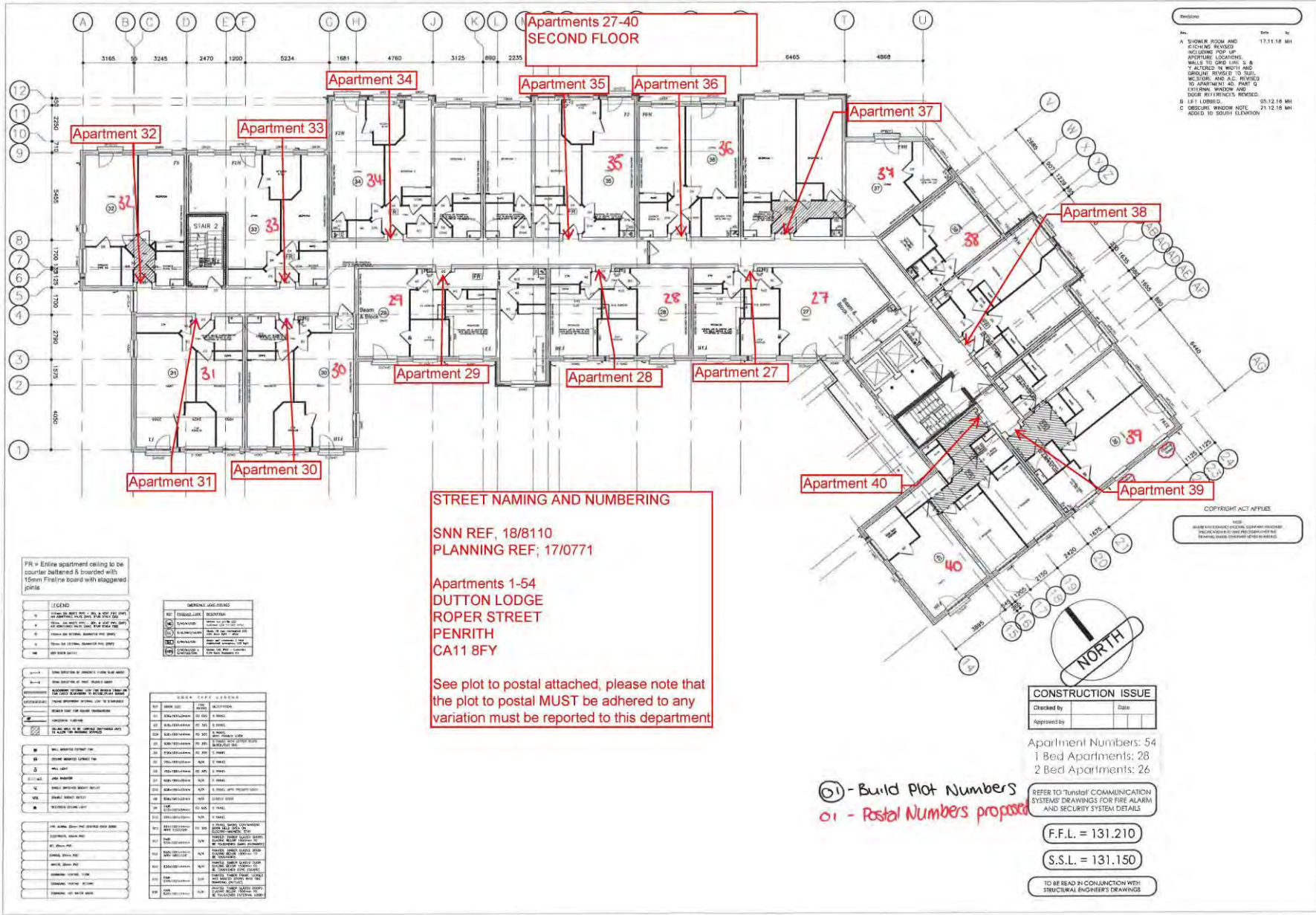
⊙ - Build Plot Numbers
⊙ - Postal Numbers Proposed

Apartment Numbers: 54
1 Bed Apartments: 28
2 Bed Apartments: 26

REFER TO 'Structural COMMUNICATION SYSTEMS' DRAWINGS FOR FIRE ALARM AND SECURITY SYSTEM DETAILS

F.F.L. = 128.510
S.S.L. = 128.450

TO BE READ IN CONJUNCTION WITH STRUCTURAL ENGINEER'S DRAWINGS



Revisions

Rev	Description	Date
1	SILOH R ROOM AND RICHING REVISIONS INCLUDING POP UP APERTURE LOCATIONS, WALLS TO GRID LAY, S & T ALTERED IN WIDTH AND LINGULINE REVISION TO DUELS	17.11.18 MH
2	W.C. TOILET AND AC INCLINED TO ADJUSTMENT AS PART OF EXISTING WINDOW AND DOOR REVISIONS REVISED.	25.12.18 MH
3	B.1.F. LINGULINE	21.12.18 MH
4	C. EXISTING WINDOW NOTE ADDED TO SOUTH ELEVATION	

FR = Entire apartment ceiling to be counter battened & boarded with 15mm Fireline board with staggered joints

SYMBOL	DESCRIPTION
1	100mm FIRE LINE BOARD
2	100mm FIRE LINE BOARD
3	100mm FIRE LINE BOARD
4	100mm FIRE LINE BOARD
5	100mm FIRE LINE BOARD
6	100mm FIRE LINE BOARD
7	100mm FIRE LINE BOARD
8	100mm FIRE LINE BOARD
9	100mm FIRE LINE BOARD
10	100mm FIRE LINE BOARD
11	100mm FIRE LINE BOARD
12	100mm FIRE LINE BOARD
13	100mm FIRE LINE BOARD
14	100mm FIRE LINE BOARD
15	100mm FIRE LINE BOARD
16	100mm FIRE LINE BOARD
17	100mm FIRE LINE BOARD
18	100mm FIRE LINE BOARD
19	100mm FIRE LINE BOARD
20	100mm FIRE LINE BOARD
21	100mm FIRE LINE BOARD
22	100mm FIRE LINE BOARD
23	100mm FIRE LINE BOARD
24	100mm FIRE LINE BOARD
25	100mm FIRE LINE BOARD
26	100mm FIRE LINE BOARD
27	100mm FIRE LINE BOARD
28	100mm FIRE LINE BOARD
29	100mm FIRE LINE BOARD
30	100mm FIRE LINE BOARD
31	100mm FIRE LINE BOARD
32	100mm FIRE LINE BOARD
33	100mm FIRE LINE BOARD
34	100mm FIRE LINE BOARD
35	100mm FIRE LINE BOARD
36	100mm FIRE LINE BOARD
37	100mm FIRE LINE BOARD
38	100mm FIRE LINE BOARD
39	100mm FIRE LINE BOARD
40	100mm FIRE LINE BOARD
41	100mm FIRE LINE BOARD
42	100mm FIRE LINE BOARD
43	100mm FIRE LINE BOARD
44	100mm FIRE LINE BOARD
45	100mm FIRE LINE BOARD
46	100mm FIRE LINE BOARD
47	100mm FIRE LINE BOARD
48	100mm FIRE LINE BOARD
49	100mm FIRE LINE BOARD
50	100mm FIRE LINE BOARD
51	100mm FIRE LINE BOARD
52	100mm FIRE LINE BOARD
53	100mm FIRE LINE BOARD
54	100mm FIRE LINE BOARD
55	100mm FIRE LINE BOARD
56	100mm FIRE LINE BOARD
57	100mm FIRE LINE BOARD
58	100mm FIRE LINE BOARD
59	100mm FIRE LINE BOARD
60	100mm FIRE LINE BOARD
61	100mm FIRE LINE BOARD
62	100mm FIRE LINE BOARD
63	100mm FIRE LINE BOARD
64	100mm FIRE LINE BOARD
65	100mm FIRE LINE BOARD
66	100mm FIRE LINE BOARD
67	100mm FIRE LINE BOARD
68	100mm FIRE LINE BOARD
69	100mm FIRE LINE BOARD
70	100mm FIRE LINE BOARD
71	100mm FIRE LINE BOARD
72	100mm FIRE LINE BOARD
73	100mm FIRE LINE BOARD
74	100mm FIRE LINE BOARD
75	100mm FIRE LINE BOARD
76	100mm FIRE LINE BOARD
77	100mm FIRE LINE BOARD
78	100mm FIRE LINE BOARD
79	100mm FIRE LINE BOARD
80	100mm FIRE LINE BOARD
81	100mm FIRE LINE BOARD
82	100mm FIRE LINE BOARD
83	100mm FIRE LINE BOARD
84	100mm FIRE LINE BOARD
85	100mm FIRE LINE BOARD
86	100mm FIRE LINE BOARD
87	100mm FIRE LINE BOARD
88	100mm FIRE LINE BOARD
89	100mm FIRE LINE BOARD
90	100mm FIRE LINE BOARD
91	100mm FIRE LINE BOARD
92	100mm FIRE LINE BOARD
93	100mm FIRE LINE BOARD
94	100mm FIRE LINE BOARD
95	100mm FIRE LINE BOARD
96	100mm FIRE LINE BOARD
97	100mm FIRE LINE BOARD
98	100mm FIRE LINE BOARD
99	100mm FIRE LINE BOARD
100	100mm FIRE LINE BOARD

STREET NAMING AND NUMBERING

SNN REF, 18/8110
PLANNING REF, 17/0771

Apartments 1-54
DUTTON LODGE
ROPER STREET
PENRITH
CA11 8FY

See plot to postal attached, please note that the plot to postal MUST be adhered to any variation must be reported to this department.

CONSTRUCTION ISSUE	
Checked by	Date
Approved by	

Apartment Numbers: 54
1 Bed Apartments: 28
2 Bed Apartments: 26

REFER TO 'Tunstall' COMMUNICATION SYSTEMS DRAWINGS FOR FIRE ALARM AND SECURITY SYSTEM DETAILS.

F.F.L. = 131.210

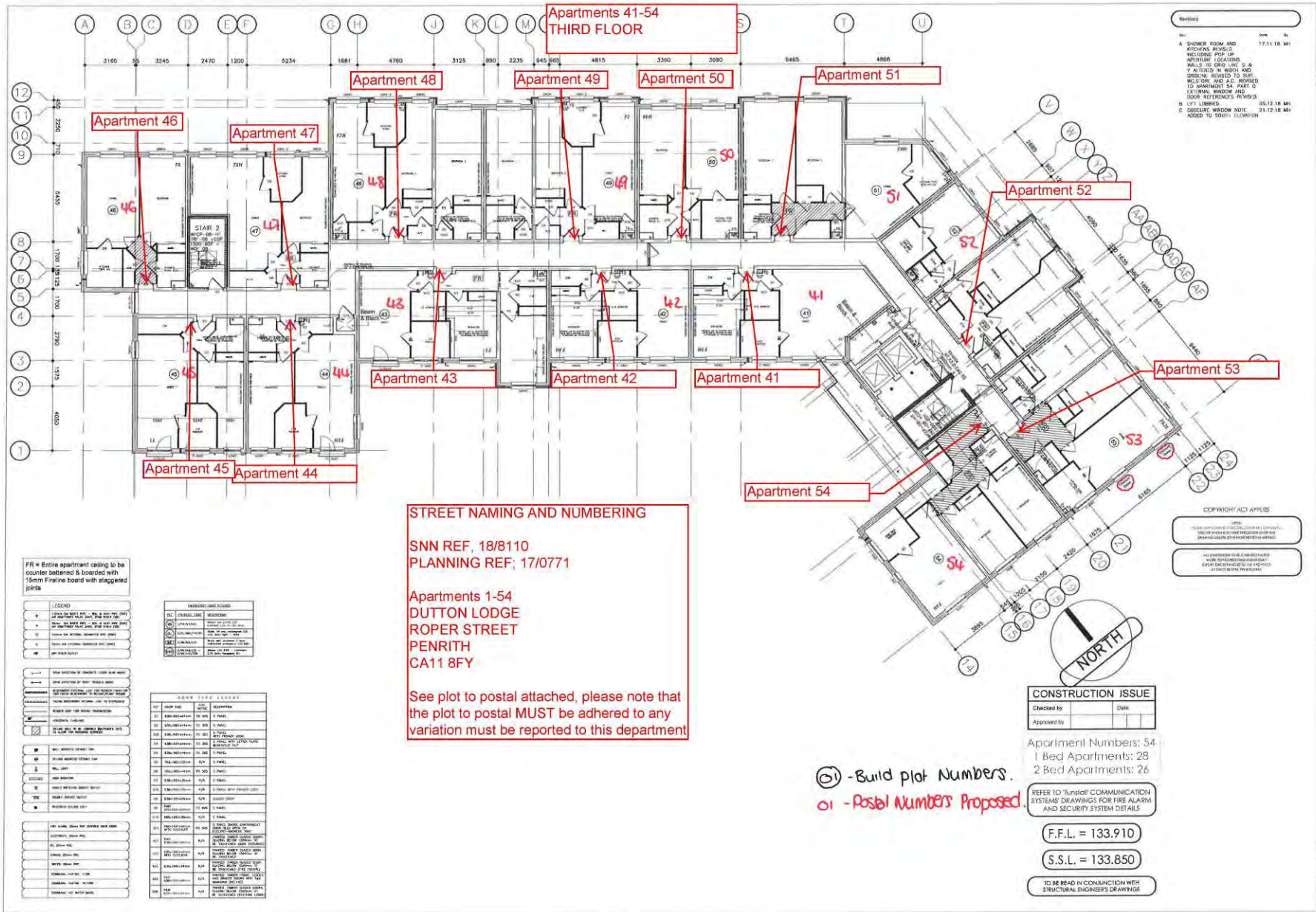
S.S.L. = 131.150

TO BE READ IN CONJUNCTION WITH STRUCTURAL ENGINEER'S DRAWINGS

⊙1 - Build Plot Numbers
⊙1 - Postal Numbers proposed

COPYRIGHT ACT APPLIES

THIS DRAWING IS THE PROPERTY OF TUNSTALL COMMUNICATIONS. IT IS TO BE USED ONLY FOR THE PROJECT AND SITE SPECIFICALLY IDENTIFIED IN THE TITLE BLOCK.



**Apartments 41-54
THIRD FLOOR**

- Revisions
- | No. | Date | By |
|-----|----------|----|
| A | 17.12.18 | MH |
- A SHOWER ROOM AND KITCHENS ABOVE INCLUDING POOL DECK VENTURE LOCATIONS WALLS TO GRID LINE S & 3' ABOVE IN BATH AND GREENLINE REVISED TO SUIT HISTORY AND A.C. REFERRED TO APARTMENT 54 PART C EXTERNAL WINDOW AND DOOR REFERENCES REVISED
- B LIFT CORRIDOR, DOOR REFERENCES REVISED
- C EXTERIOR WINDOW AND DOOR REFERENCES REVISED TO SUIT HISTORY

FR = Entire apartment ceiling to be counter battened & boarded with 15mm Fireline board with staggered joints

LEGEND

FR	FRONT WALL	FRONT WALL
BR	BACK WALL	BACK WALL
SI	SIDE WALL	SIDE WALL
TO	TOP OF WALL	TOP OF WALL
BO	BASE OF WALL	BASE OF WALL
ST	STAIR	STAIR
ST2	STAIR 2	STAIR 2
ST3	STAIR 3	STAIR 3
ST4	STAIR 4	STAIR 4
ST5	STAIR 5	STAIR 5
ST6	STAIR 6	STAIR 6
ST7	STAIR 7	STAIR 7
ST8	STAIR 8	STAIR 8
ST9	STAIR 9	STAIR 9
ST10	STAIR 10	STAIR 10
ST11	STAIR 11	STAIR 11
ST12	STAIR 12	STAIR 12
ST13	STAIR 13	STAIR 13
ST14	STAIR 14	STAIR 14
ST15	STAIR 15	STAIR 15
ST16	STAIR 16	STAIR 16
ST17	STAIR 17	STAIR 17
ST18	STAIR 18	STAIR 18
ST19	STAIR 19	STAIR 19
ST20	STAIR 20	STAIR 20
ST21	STAIR 21	STAIR 21
ST22	STAIR 22	STAIR 22
ST23	STAIR 23	STAIR 23
ST24	STAIR 24	STAIR 24
ST25	STAIR 25	STAIR 25
ST26	STAIR 26	STAIR 26
ST27	STAIR 27	STAIR 27
ST28	STAIR 28	STAIR 28
ST29	STAIR 29	STAIR 29
ST30	STAIR 30	STAIR 30
ST31	STAIR 31	STAIR 31
ST32	STAIR 32	STAIR 32
ST33	STAIR 33	STAIR 33
ST34	STAIR 34	STAIR 34
ST35	STAIR 35	STAIR 35
ST36	STAIR 36	STAIR 36
ST37	STAIR 37	STAIR 37
ST38	STAIR 38	STAIR 38
ST39	STAIR 39	STAIR 39
ST40	STAIR 40	STAIR 40
ST41	STAIR 41	STAIR 41
ST42	STAIR 42	STAIR 42
ST43	STAIR 43	STAIR 43
ST44	STAIR 44	STAIR 44
ST45	STAIR 45	STAIR 45
ST46	STAIR 46	STAIR 46
ST47	STAIR 47	STAIR 47
ST48	STAIR 48	STAIR 48
ST49	STAIR 49	STAIR 49
ST50	STAIR 50	STAIR 50
ST51	STAIR 51	STAIR 51
ST52	STAIR 52	STAIR 52
ST53	STAIR 53	STAIR 53
ST54	STAIR 54	STAIR 54
ST55	STAIR 55	STAIR 55
ST56	STAIR 56	STAIR 56
ST57	STAIR 57	STAIR 57
ST58	STAIR 58	STAIR 58
ST59	STAIR 59	STAIR 59
ST60	STAIR 60	STAIR 60
ST61	STAIR 61	STAIR 61
ST62	STAIR 62	STAIR 62
ST63	STAIR 63	STAIR 63
ST64	STAIR 64	STAIR 64
ST65	STAIR 65	STAIR 65
ST66	STAIR 66	STAIR 66
ST67	STAIR 67	STAIR 67
ST68	STAIR 68	STAIR 68
ST69	STAIR 69	STAIR 69
ST70	STAIR 70	STAIR 70
ST71	STAIR 71	STAIR 71
ST72	STAIR 72	STAIR 72
ST73	STAIR 73	STAIR 73
ST74	STAIR 74	STAIR 74
ST75	STAIR 75	STAIR 75
ST76	STAIR 76	STAIR 76
ST77	STAIR 77	STAIR 77
ST78	STAIR 78	STAIR 78
ST79	STAIR 79	STAIR 79
ST80	STAIR 80	STAIR 80
ST81	STAIR 81	STAIR 81
ST82	STAIR 82	STAIR 82
ST83	STAIR 83	STAIR 83
ST84	STAIR 84	STAIR 84
ST85	STAIR 85	STAIR 85
ST86	STAIR 86	STAIR 86
ST87	STAIR 87	STAIR 87
ST88	STAIR 88	STAIR 88
ST89	STAIR 89	STAIR 89
ST90	STAIR 90	STAIR 90
ST91	STAIR 91	STAIR 91
ST92	STAIR 92	STAIR 92
ST93	STAIR 93	STAIR 93
ST94	STAIR 94	STAIR 94
ST95	STAIR 95	STAIR 95
ST96	STAIR 96	STAIR 96
ST97	STAIR 97	STAIR 97
ST98	STAIR 98	STAIR 98
ST99	STAIR 99	STAIR 99
ST100	STAIR 100	STAIR 100

STREET NAMING AND NUMBERING

SNN REF, 18/8110
PLANNING REF; 17/0771

Apartments 1-54
DUTTON LODGE
ROPER STREET
PENRITH
CA11 8FY

See plot to postal attached, please note that the plot to postal MUST be adhered to any variation must be reported to this department

CONSTRUCTION ISSUE

Checked by	Date
Approved by	

Apartment Numbers: 54
1 Bed Apartments: 28
2 Bed Apartments: 26

REFER TO 'INSTALL' COMMUNICATION SYSTEMS DRAWINGS FOR FIRE ALARM AND SECURITY SYSTEM DETAILS

F.F.L. = 133.910
S.S.L. = 133.850

TO BE READ IN CONJUNCTION WITH STRUCTURAL ENGINEER'S DRAWINGS

Ⓢ - Build plot Numbers.
o1 - Postal Numbers Proposed

COPYRIGHT ACT APPLIES

THIS DRAWING IS THE PROPERTY OF THE ARCHITECT AND IS NOT TO BE REPRODUCED OR COPIED IN ANY MANNER WITHOUT THE WRITTEN PERMISSION OF THE ARCHITECT.

IF YOU ARE NOT THE ARCHITECT, YOU MUST CONTACT THE ARCHITECT FOR PERMISSION TO REPRODUCE OR COPY THIS DRAWING.



Land At Roper Street - Penrith - Cumbria

SITE LAYOUT
 © 2017 PLANNING ISSUES
planningissues
 COFF M. TUNNICLIFFE
 CONSULTING ARCHITECTS
 100-102 ROPER STREET, PENRITH, CUMBRIA, LA1 1YU
 TEL: 01768 874444
 EMAIL: info@planningissues.co.uk