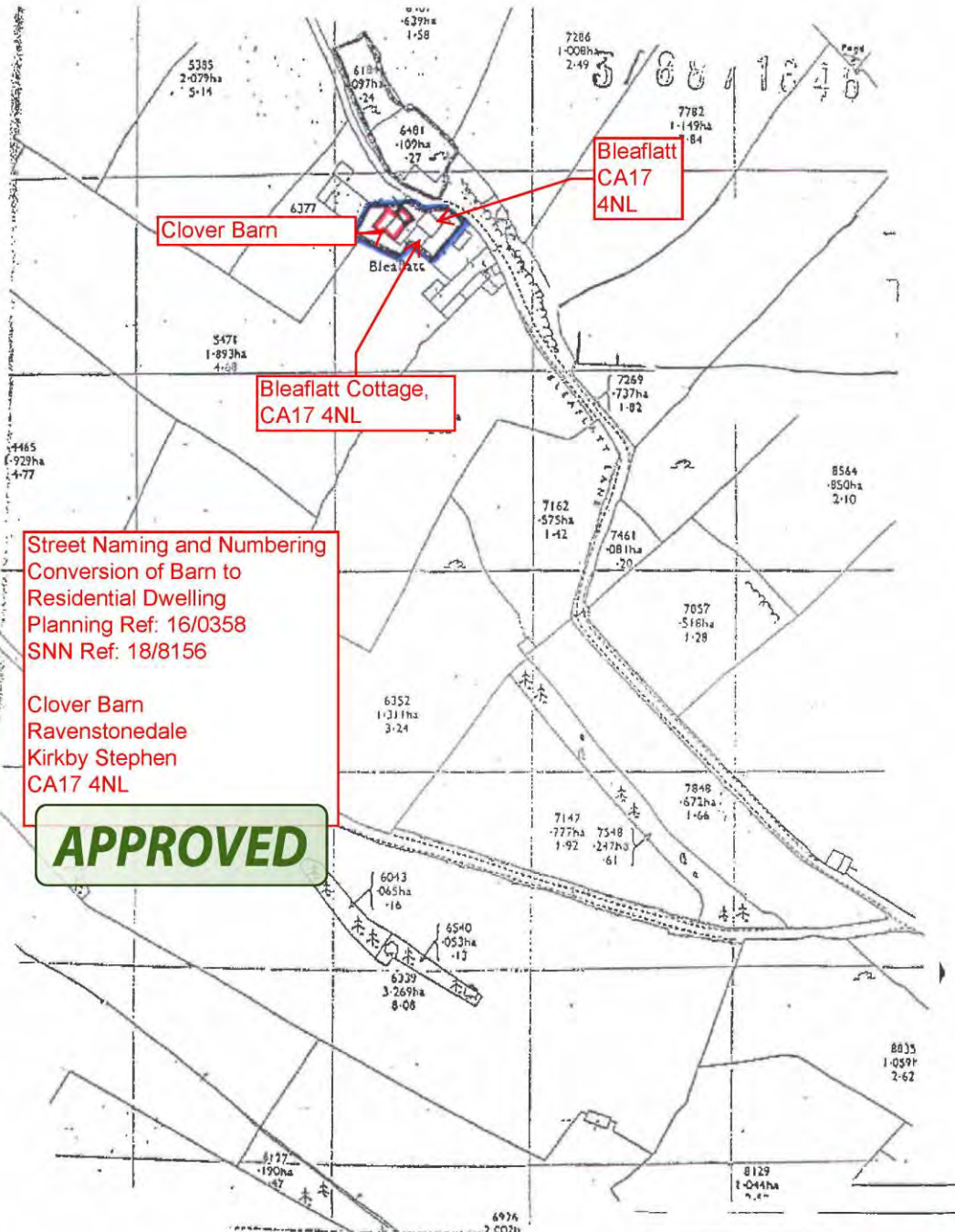


18/8156 Clover Barn Ravenstonedale



Street Naming and Numbering
 Conversion of Barn to
 Residential Dwelling
 Planning Ref: 16/0358
 SNN Ref: 18/8156

Clover Barn
 Ravenstonedale
 Kirkby Stephen
 CA17 4NL

APPROVED

EDEN TECHNICAL SERVICES				
29 SEP 2008				
REP	CHK	FILE	SEC	
REP	REP	CHK	SEC	
CHK	CHK	CHK	SEC	
CHK	CHK	CHK	SEC	

Revisions	N/A
Scale	Not to be scaled
Project	①
Location Plan	
3/08/0770	
Drawing number	010 1:2500 09/08